

DEDICATION

KNOW ALL MEN BY THESE PRESENTS, That the Corporation named below, being the owner in fee simple of the lands described in the foregoing caption to this plat, hereby dedicates said lands and plat for the uses and purposes therein expressed and dedicates the STREETS, AND EASEMENTS shown hereon to the perpetual use of the public, and IN WITNESS WHEREOF, has caused these presents to be signed and attested to by the officers named below and its corporate seal to be affixed hereto on March 30, 1967

CARRIGAN & BOLAND, INC.
By Reagan President

Attest: H. F. Boland SECRETARY

Signed and sealed in the presence of:
Alise S. Wellon
Maurice A. Rawles

STATE OF FLORIDA COUNTY OF ORANGE
THIS IS TO CERTIFY, That on March 30, 1967 before me, an officer duly authorized to take acknowledgments in the State and County aforesaid, personally appeared R.E. CARRIGAN and H.F. BOLAND respectively, President and SECRETARY of the above named corporation incorporated under the laws of the State of FLORIDA, to me known to be the individuals and officers described in and who executed the foregoing Dedication and severally acknowledged the execution thereof to be their free act and deed as such officers thereunto duly authorized; that the official seal of said corporation is duly affixed thereto; and that the said Dedication is the act and deed of said corporation.
IN WITNESS WHEREOF, I have hereto set my hand and seal on the above date.

Alise S. Wellon
NOTARY PUBLIC
My Commission Expires April 17, 1970

CERTIFICATE OF SURVEYOR

KNOW ALL MEN BY THESE PRESENTS, That the undersigned, being a licensed and registered land surveyor, does hereby certify that on Mar. 30, 1967 he completed the survey of the lands as shown in the foregoing plat; that said plat is a correct representation of the lands therein described and plotted; that permanent reference monuments have been placed as shown thereon as required by Chapter 177, Florida Statutes; and that said land is located in

Orange County, Florida. Dated Mar. 30, 1967
Wm. C. Hart Registration No. 890

CERTIFICATE OF APPROVAL BY PLANNING AND ZONING COMMISSION

THIS IS TO CERTIFY, That on April 17, 1967 the Orange County Planning & Zoning Commission approved the above plat.

E. Gene High Director

CERTIFICATE OF APPROVAL BY COUNTY ENGINEER

Examined and Approved: F. W. Dawitt 4/27/67
County Engineer Date

CERTIFICATE OF APPROVAL BY BOARD OF COUNTY COMMISSIONERS

THIS IS TO CERTIFY, That on MAY 1, 1967 the foregoing plat was approved by the Board of County Commissioners of Orange County, Florida.

James J. Cooper Chairman of the Board

Attest: Arthur W. Newell Clerk of the Board
By Jane De

CERTIFICATE OF CLERK

I HEREBY CERTIFY, That I have examined the foregoing plat and find that it complies in form with all the requirements of Chapter 177, Florida Statutes, and was filed for record on MAY 2, 1967 at 4:33 PM File No. 131206

Arthur W. Newell Clerk of the Circuit Court in and for Orange County, Fla.
By Jane De

UNIVERSITY HYLANDS REPLAT

ORANGE COUNTY, FLORIDA

DESCRIPTION

BEING A REPLAT OF LOTS 1, 2, 3, 4, BLOCK "A"; ALL OF BLOCK "C"; ALL OF BLOCK "D"; ALL OF LAVOISIER AVENUE (LESS THE WEST 30 FT. OF THE NORTH 230 FT. THEREOF); LOTS 3 THROUGH 12, BLOCK "E"; ALL OF BLOCK "F"; ALL OF BLOCK "G"; ALL OF BLOCK "H"; AND LOTS 25, 26, 27, 28, 29, 30, BLOCK "J"; LOTS 1 THROUGH 12, INCLUSIVE, BLOCK "B"; OF UNIVERSITY HIGHLANDS AS RECORDED IN PLAT BOOK Z, PAGE 137 OF THE PUBLIC RECORDS OF ORANGE COUNTY, FLORIDA.

RESOLUTIONS CLOSING, VACATING AND ABANDONING 6 FT UTILITY EASEMENT ALONG THE REAR LOT LINE OF LOTS 1, 2, 3. DATED: DECEMBER 12, 1976. RECORDED IN O.A. BOOK 2744 PGS 1203 AND 1204. SEE CONDOMINIUM B.L. 5 PG. 123 & 124, PLATTING PART OF LOT 36/127.

SCALE 1" = 100'

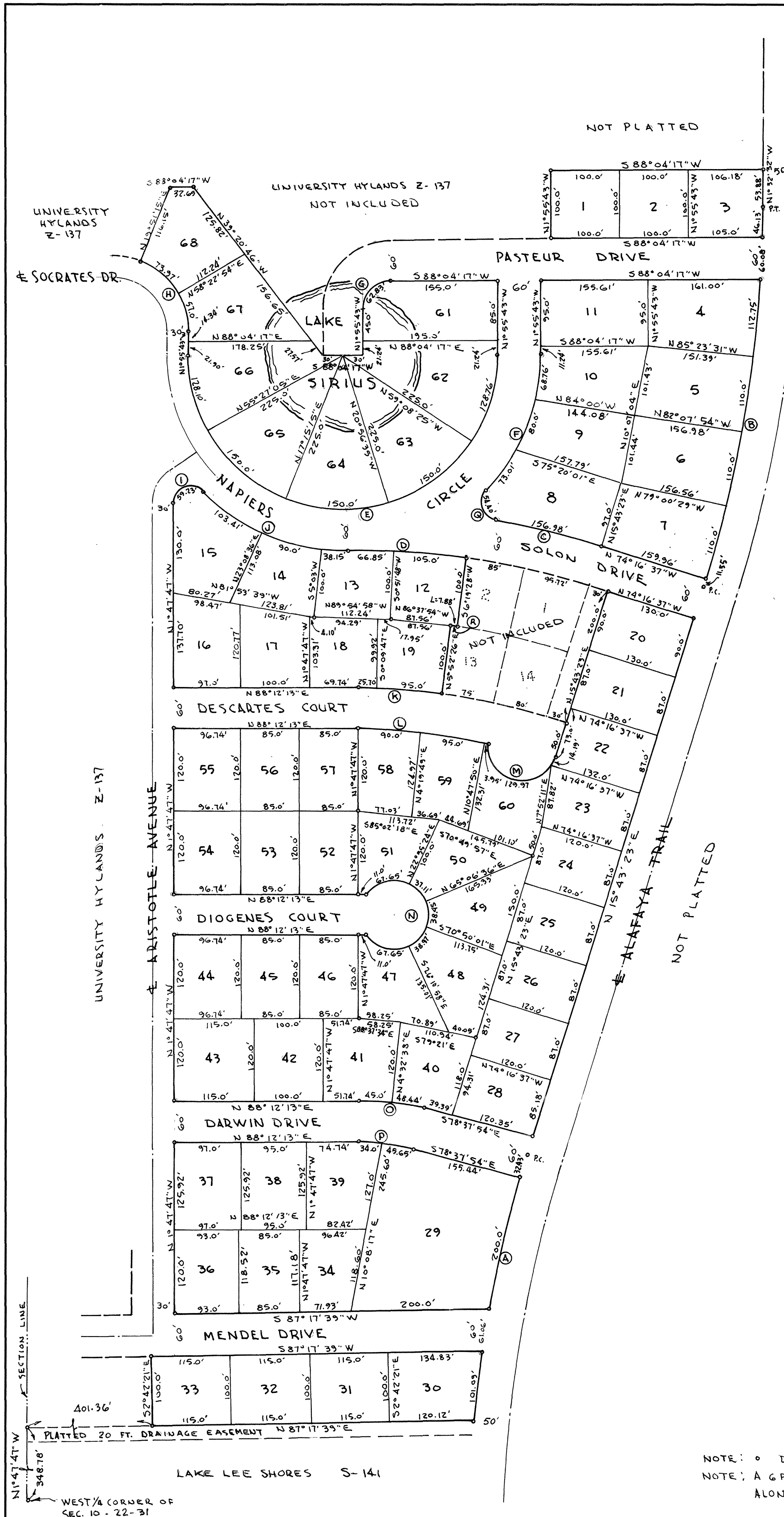
See Villages of Camelot
Plat Book 73 Page 10
Recorded January 10 2009

CURVE DATA

CURVE	DELTA	TANGENT	RADIUS	ARC
A	11° 32' 03"	197.97'	1960.08'	394.58'
B	17° 15' 59"	282.40'	1860.08'	560.51'
C	7° 44' 32"	78.61'	1161.68'	156.98'
D	8° 56' 16"	86.11'	1101.68'	171.85'
E	180° 00' 00"	00	225.00'	706.86'
F	44° 35' 02"	116.84'	289.00'	221.77'
G	90° 00' 00"	40.00'	40.00'	62.83'
H	68° 15' 02"	74.50'	110.00'	130.97'
I	135° 44' 09"	61.47'	25.00'	59.23'
J	46° 33' 10"	122.60'	289.00'	231.56'
K	1° 40' 13"	60.44'	901.68'	120.70'
L	12° 51' 44"	94.87'	841.68'	188.95'
M	148° 55' 55"	179.88'	50.00'	144.16'
N	286° 15' 57"	50.00'	50.00'	249.83'
O	13° 09' 53"	46.92'	406.65'	93.44'
P	13° 09' 53"	40.00'	346.65'	79.65'
Q	124° 40' 28"	47.69'	25.00'	54.40'
R	0° 27' 03"	3.95'	1001.68'	7.88'

NOTE: O DENOTES P.R.M.
NOTE: A 6 FT. UTILITY EASEMENT IS RESERVED ALONG REAR LINE OF ALL LOTS.

Wm. C. Hart
COUNTY SURVEYOR
ORANGE COUNTY, FLORIDA
827 N. HIGHLAND PL. 422-4334
ORLANDO - FLORIDA



WEST 1/4 CORNER OF SEC. 10 - 22 - 31