

MISC. UN-RECORDED PLATS THAT WERE USED BY TAX APPRAISER OFFICE

NW CORNER
SE 1/4, NW 1/4
SEC. 28-22-32

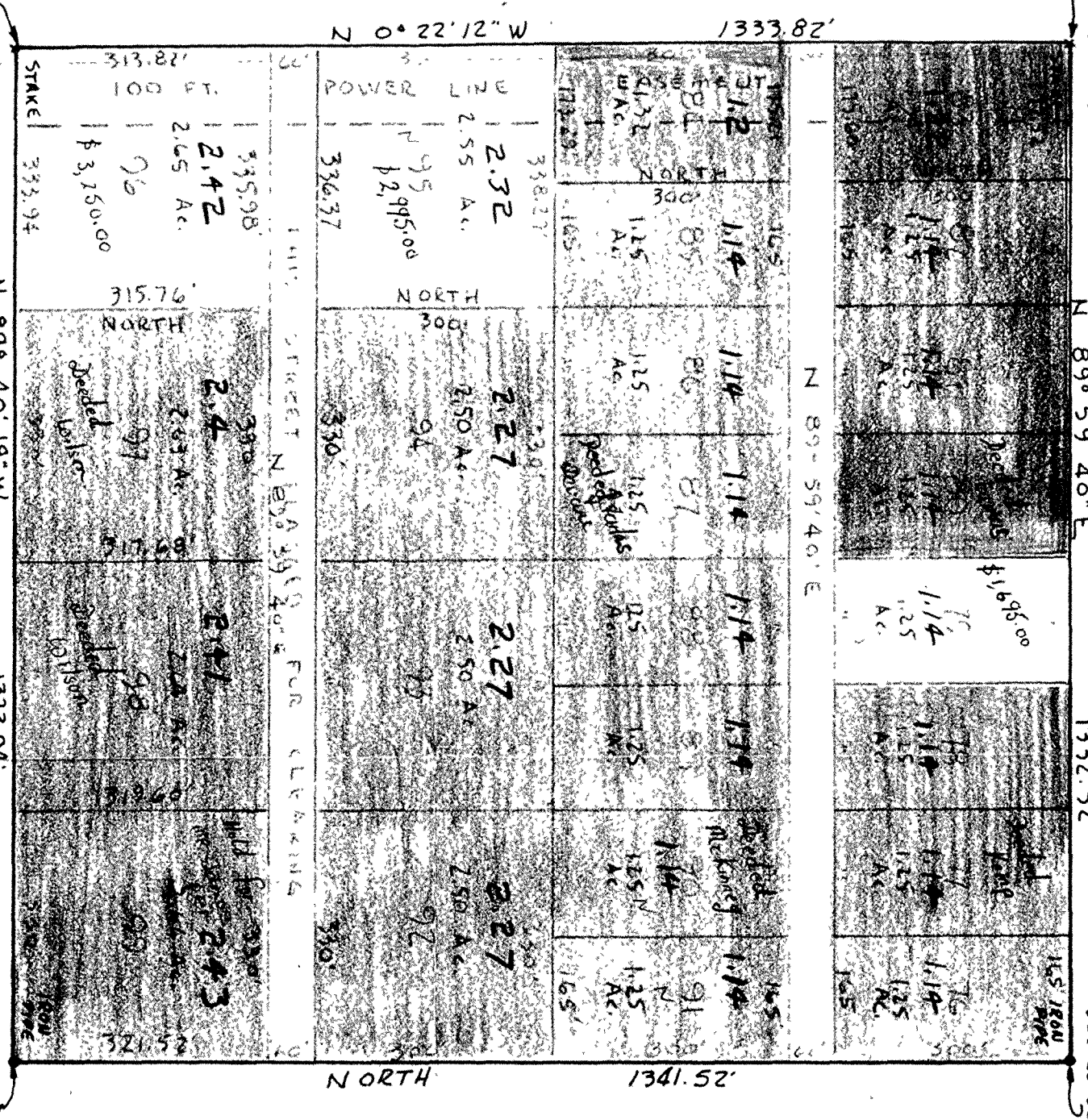
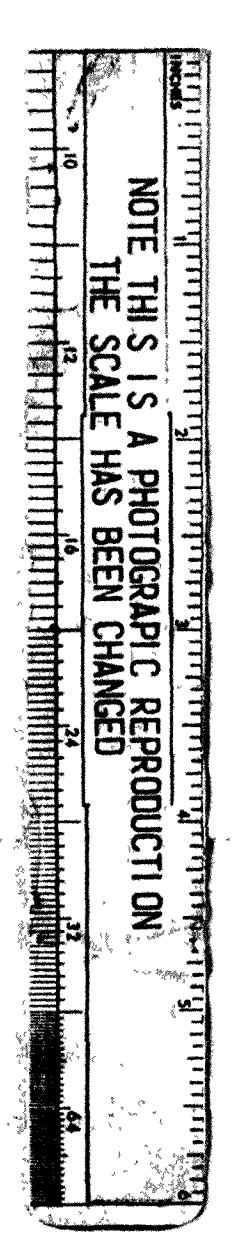
NE CORNER
SE 1/4, NW 1/4
SEC. 28-22-32

SCALE 1" = 200'
DATE SEPT 21, 1961
JOB NO. 61-915

SW CORNER
SE 1/4, NW 1/4
SEC. 28-22-32

N 89° 40' 19" W 123.94'

CENTER OF
SEC. 28-22-32



40.79 Ac Tot

**BOUNDARY SURVEY &
PROPOSED SUBDIVISION
BITULO RANCHES FIRST ADDITION**

THE SE 1/4 OF THE NW 1/4 OF SECTION 28 TOWNSHIP
22 SOUTH, RANGE 32 EAST.

FOR: CARRIGAN REALTY, INC.

Wm C. Hart - County Surveyor
827 N. HIGHLAND
ORLANDO FLORIDA
PH. GA 2-4334

(CERTIFIED CORRECT)
Wm C. Hart
REG. LAND SURVEYOR No 890