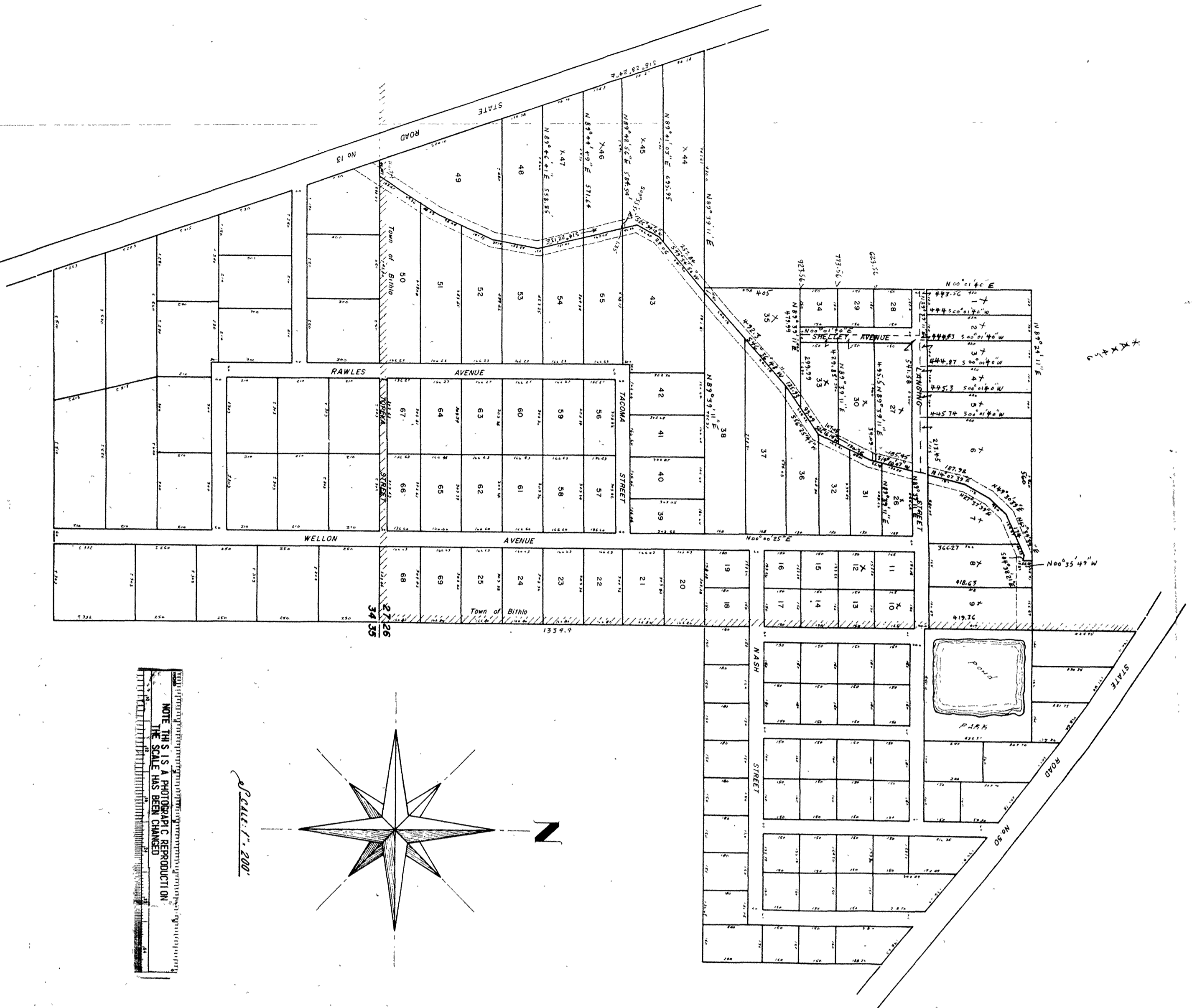


Bithlo Ranches Annex

ORANGE

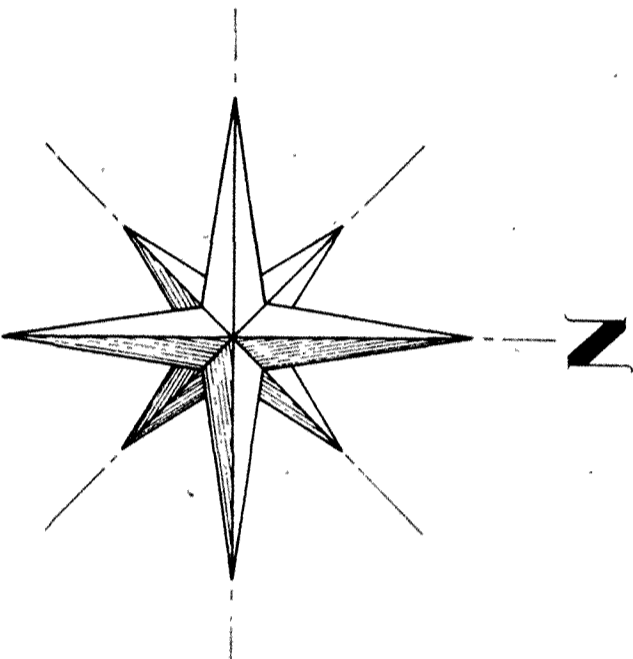
COUNTY

FLORIDA



NOTE: THIS IS A PHOTOGRAPHIC REPRODUCTION OF THE ORIGINAL PLAT. THE SCALE HAS BEEN CHANGED.

Scale: 1" = 200'



CARRIGAN & BOLAND, Inc
 672 NORTH ORANGE AVENUE
 ORLANDO, FLORIDA

WM. C. HART
 COUNTY SURVEYOR
 ORANGE COUNTY, FLORIDA
 827 HIGHLAND AVENUE, PHONE 422-4334
 ORLANDO, FLORIDA 32803

Misc. Un-Recorded Plat That Was Used By Tax Appraiser Office

#5